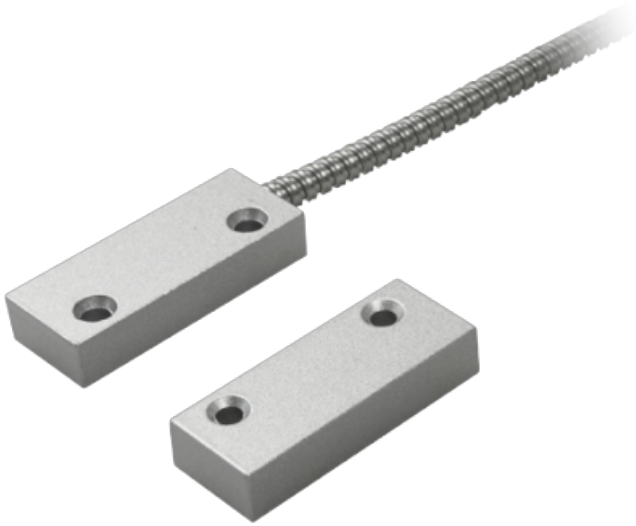




**WWW.SECURITYSYSTEMS.NO**

## **MARCA BLANCA MC-SMMC-A1**



Magnetic contact - Suitable for metal installation - Reed Detection Technology - Connection system of 2 wires protected by metal mesh - Resistance to mechanical and electrical shocks

- Magnetic surface detector
- Reed Technology
- High power
- Suitable for metal installation
- Resistance to mechanical and electrical shocks
- System of 2 wires protected by metal mesh