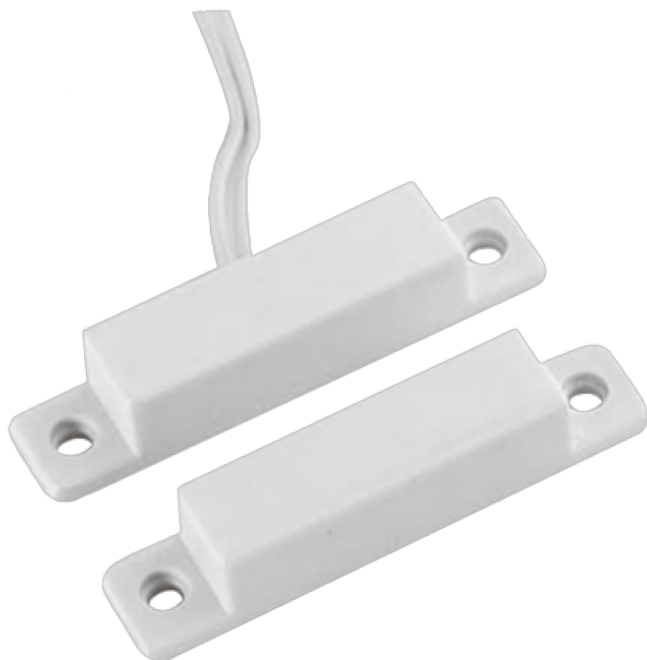




**WWW.SECURITYSYSTEMS.NO**

## **MARCA BLANCA MC-SWPC**



Magnetic contact - Suitable for installation in wood - Reed Detection Technology - Connection system by 2 wires - Resistance to mechanical and electrical shocks

- Magnetic surface detector
- Reed Technology
- Suitable for installation in wood
- Resistance to mechanical and electrical shocks
- 2-wire system