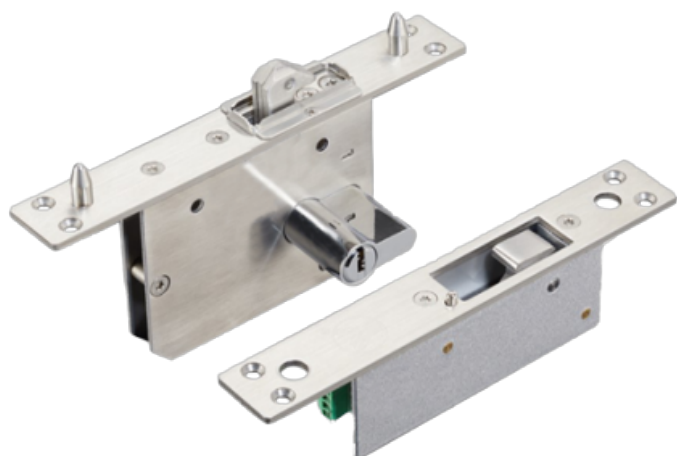




**WWW.SECURITYSYSTEMS.NO**

## **MARCA BLANCA YSD-230**



Electromechanical safety lock - Fail Secure and Fail Safe opening mode - Holding force 800 kg | Door sensor - Compatible with sliding doors - Stainless steel SUS304 - European cylinder included with keys

- Electromechanical hook security lock
- European cylinder with keys included
- NO (Fail Secure) and NC (Fail Safe) operation
- Door sensor
- Mounting on wood, metal and glass doors
- Suitable for sliding doors
- Made of stainless steel SUS304
- 12 VDC
- IP55 and anti-vandal protection